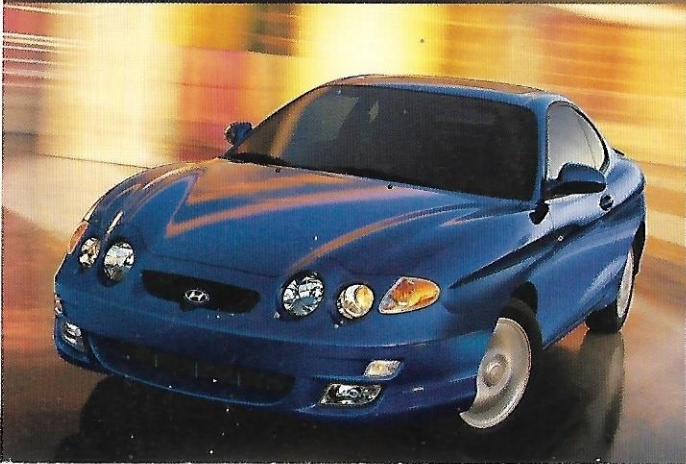


HYUNDAI

2001
AUTOMOBILES



Hyundai Advantage™

AMERICA'S BEST WARRANTY

**10 YEAR 100,000 MILE
POWERTRAIN PROTECTION**
Covers most engine and transaxle components.

**5 YEAR 60,000 MILE
BUMPER-TO-BUMPER COVERAGE**
Covers nearly every new vehicle component.

**5 YEAR UNLIMITED MILES
24 HOUR ROADSIDE ASSISTANCE**
Covers towing (including accident-related), lock-out,
flat tire and jump starting.

**5 YEAR 100,000 MILE
ANTI-PERFORATION WARRANTY**
Covers corrosion related rust-through of body
sheet metal from inside to out.



XG300



SONATA



It's amazing how much confidence three little words can inspire. But to Hyundai owners, America's Best Warranty* is more than a phrase. It represents the freedom of the Hyundai Advantage™: America's Best Warranty, which provides more complete protection than any other car warranty. The security of roadside assistance available 24 hours a day. And the satisfaction of knowing that their Hyundai is backed better because it's built better. Which brings us to another three words familiar to Hyundai owners: peace of mind.



ELANTRA



SANTA FE



TIBURON



ACCENT GL



ACCENT

TABLE OF CONTENTS

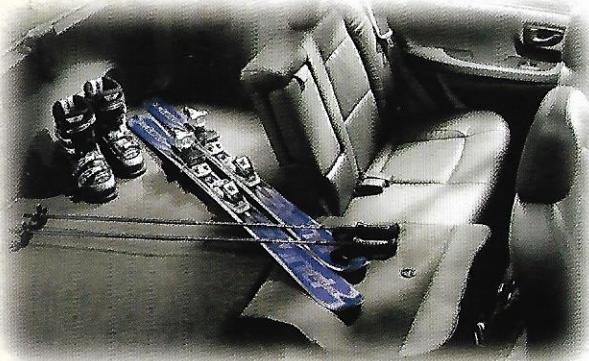
Santa Fe	2/3
XG300	4/5
Sonata	6/7
Elantra	8/9
Tiburon	10/11
Accent	12/13

*See dealer for LIMITED WARRANTY details.



SANTA FE





**WHEREVER THE ROAD LEADS,
SANTA FE IS READY.**

With 5-passenger seating, a remarkably smooth ride, and a host of protective features, Santa Fe gets you where you need to go, in comfort, safety and obviously, in style. Santa Fe offers features that even a sports sedan might envy. Like the power of a high-output, 2.7-liter, 181-horsepower, DOHC aluminum V6 engine. Go-anywhere, full-time 4-wheel drive. A 4-speed, SHIFTRONIC™



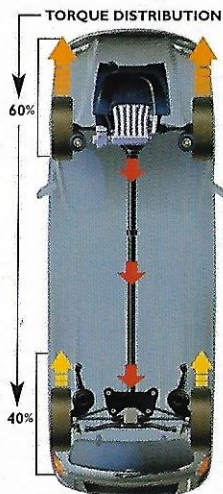
automatic transmission combining automatic convenience with manual control. Dual front airbags* and even an

available 4-wheel anti-lock disc brake system (ABS)** with Traction Control (TCS)† for added

stability on slippery driving surfaces. What's more,

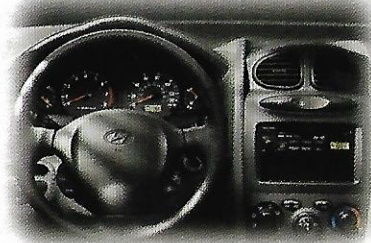


Santa Fe's roomy cabin is designed to provide real driving pleasure. The driver's seat, for instance, is anatomically contoured and 10-way adjustable for maximum comfort on long trips. Multiple storage bins and recesses are placed throughout the cabin. There's even an overhead console with map light, digital clock and sunglasses holder.



Welcome to Santa Fe. Where

comfort and confidence come naturally.



Utility Package Includes:

- 2.4-liter, 149-horsepower, DOHC Engine
- Air Conditioning
- Dual Front Airbags*
- 6-speaker AM/FM/CD Audio System
- Roof Rack Side Rails
- Rear Privacy Glass
- First Aid Kit
- Power Windows, Locks and Mirrors
- Cruise Control
- Keyless Remote Entry with Alarm
- 60/40 Split-folding and Reclining Rear Seat
- 16" Alloy Wheels

GLS Adds:

- 2.7-liter, 181-horsepower, V6 Engine
- 4-Speed SHIFTRONIC™ Automatic Transmission
- Front Fog Lights
- Leather-wrapped Steering Wheel and Shift Knob

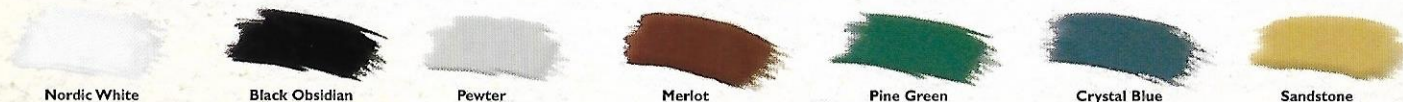
LX Adds:

- Leather Seating Trim
- Chrome Door Handles
- Brushed Stainless Steel Scuff Plates

*The Supplemental Restraint (airbag) System (SRS) is designed to work with the 3-point seatbelt system. The SRS deploys in certain front end impact conditions where significant injury is likely. The SRS is not a substitute for seatbelts which should be worn at all times. Children under the age of 13 should be restrained securely in the rear seat. NEVER place a rear-facing child seat in the front seat of a vehicle with a passenger-side airbag.

** Available as part of a specific option package. Please ask dealer about availability.

† Available as part of a specific option package. Please ask dealer about availability. The Traction Control System (TCS) is meant to enhance conscientious driving habits, and is not a substitute for proper driving procedures.



Standard Features:

- 3.0-liter, 192-horsepower, DOHC V6 Engine
- 5-speed SHIFTRONIC™ Automatic Transmission
- Dual Front and Side Airbags*
- ABS with Traction Control
- Power Leather Seats
- Automatic Air Conditioning
- Trip Computer
- Power Windows, Locks and Mirrors
- Aluminum Alloy Wheels
- Cruise Control
- 6-speaker AM/FM/CD Audio System

XG300L Adds:

- Power Glass Moonroof (optional on XG300)
- Heated Front Seats
- Memory for Driver's Seat and Mirror Positions
- Premium AM/FM/Cassette/CD Audio System
- Leather and Wood-tone Trim Steering Wheel
- Electrochromic Rearview Mirror



SO FULLY EQUIPPED, ALL THAT'S MISSING IS YOU.

Graceful, elegant styling merely hints at the refinement of the new XG300 premium sedan. Everywhere you look, the XG300 is clearly the result of sophisticated design, advanced technology and thoughtful attention to detail. It starts with the thoroughbred performance of a 192-horsepower,



24-valve, DOHC V6 engine, and a 5-speed, electronically-controlled SHIFTRONIC™ automatic transmission that offers automatic smoothness with available manual control. An abundance of luxurious standard

amenities, including leather seating.

An 8-way power adjustable driver's seat. An electronic, multi-function trip computer. A 6-speaker AM/FM/CD audio system. Fully automatic air conditioning with temperature



control. Cruise control. Remote keyless entry. Power windows, door locks, seats and mirrors. Plus a host of

advanced protective features such as dual front and side airbags*, and a 4-wheel anti-lock disc brake system (ABS) with Traction Control (TCS)** for added stability on slippery driving surfaces.

Presenting the all-new

Hyundai XG300: fly first class for the price of coach.



*The Supplemental Restraint (airbag) System (SRS) is designed to work with the 3-point seatbelt system. The SRS deploys in certain front end and/or side impact conditions where significant injury is likely. The SRS is not a substitute for seatbelts which should be worn at all times. Children under the age of 13 should be restrained securely in the rear seat. NEVER place a rear-facing child seat in the front seat of a vehicle with a passenger-side airbag.

**The Traction Control System (TCS) is meant to enhance conscientious driving habits, and is not a substitute for proper driving procedures.



Black Obsidian



Ivory Pearl



Evening Fog



Titanium



Bordeaux



Desert Sand



Nordic White



Midnight Green

XG300



XG300 in Black Obsidian

SONATA





UNCOMMON SOPHISTICATION MEETS COMMON SENSE.

You can love the 2001 Sonata for its looks alone.

But underneath its distinctively sculptured body is class-leading safety, comfort and technology. Sonata comes with the security of standard dual front and side airbags*, and available 4-wheel anti-lock disc brakes

(ABS)** with a Traction Control System (TCS)† for added



stability on slippery driving surfaces. The responsive handling and smooth ride provided by Sonata's sophisticated double-wishbone front suspension

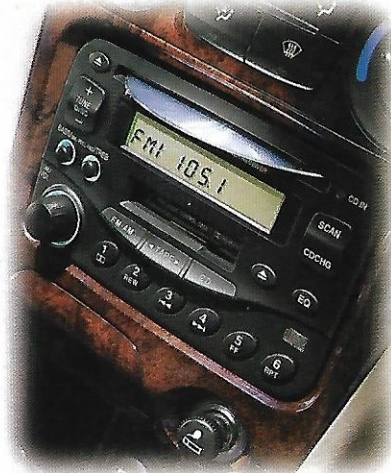
system will delight serious drivers, as will the available 2.5-liter, 24-valve V6 engine, and 4-speed, adaptive-control automatic transmission.

And when it comes to pampering passengers,

Sonata offers a generous list of standard comfort and

convenience features including air conditioning, AM/FM stereo cassette, power windows, locks and mirrors, and cruise control. And best of all, enjoying all this security, performance

and comfort doesn't require great wealth, just good sense.



*The Supplemental Restraint (airbag) System (SRS) is designed to work with the 3-point seatbelt system. The SRS deploys in certain front end and/or side impact conditions where significant injury is likely. The SRS is not a substitute for seatbelts which should be worn at all times. Children under the age of 13 should be restrained securely in the rear seat. NEVER place a rear-facing child seat in the front seat of a vehicle with a passenger-side airbag.

**Available as part of a specific option package. Please ask dealer about availability.

†Available as part of a specific option package. Please ask dealer about availability. The Traction Control System (TCS) is meant to enhance conscientious driving habits, and is not a substitute for proper driving procedures.

Standard Features:

- 2.4-liter, 149-horsepower DOHC Engine
- Dual Front and Side Airbags*
- Comfort-tuned Fully Independent Suspension
- Speed-sensitive Power Steering
- Air Conditioning
- Power Windows, Locks and Mirrors
- AM/FM Stereo Cassette
- Cruise Control
- Alloy Wheels with Michelin® Tires
- Center Storage Console
- Fully-adjustable Driver's Seat with Lumbar Support
- 3-point Seatbelts in All Positions
- Full-folding Rear Seat

GLS Adds:

- 2.5-liter, 170-horsepower DOHC V6 Engine
- 4-wheel Disc Brakes
- 6-speaker AM/FM/CD Audio System
- 60/40 Split-folding Rear Seat
- 7-spoke Alloy Wheels
- Chrome Front Grille



GLS Standard Features:

- 2.0-liter, 140-horsepower DOHC Engine
- Dual Front and Side Airbags*
- Fully Independent Suspension
- Air Conditioning
- Power Windows, Locks and Mirrors
- AM/FM Stereo Cassette
- 15" Wheels with Sporty Wheel Covers
- Center Storage Console with Armrest
- 60/40 Split-folding Rear Seat
- 3-point Seatbelts in All Positions
- Bodycolor Mirrors, Door Handles and Bodyside Molding
- Tilt Steering Column
- Rear Window Defroster



IN PEOPLE TERMS, IT'S AN OVERACHIEVER.

There's plenty to appreciate about Elantra GLS besides its distinctive, contemporary appearance.

Inside and out, its stylish sophistication is matched by features not commonly found in its class. Elantra GLS comes with advanced standard protective

features like dual front and side airbags* and 3-point seatbelts with front seatbelt pretensioners and force limiters. As well as available 4-wheel anti-lock disc brakes (ABS)** with an electronic Traction Control System (TCS)† for added stability on slippery driving



surfaces. And thanks to a precisely tuned, fully independent suspension system with gas-filled shocks and front and rear stabilizer bars, Elantra GLS offers a smooth, comfortable ride with responsive handling.

The refinement continues inside, with standard amenities such as air conditioning, power windows, locks and mirrors, AM/FM stereo cassette, tilt steering column, 60/40 split-folding rear seat and front storage console/armrest.

Introducing the new Elantra GLS. A sedan that takes you far from the everyday world, even before you turn the key.



*The Supplemental Restraint (airbag) System (SRS) is designed to work with the 3-point seatbelt system. The SRS deploys in certain front end and/or side impact conditions where significant injury is likely. The SRS is not a substitute for seatbelts which should be worn at all times. Children under the age of 13 should be restrained securely in the rear seat. NEVER place a rear-facing child seat in the front seat of a vehicle with a passenger-side airbag.

** Available as part of a specific option package. Please ask dealer about availability.

† Available as part of a specific option package. Please ask dealer about availability. The Traction Control System (TCS) is meant to enhance conscientious driving habits, and is not a substitute for proper driving procedures.



Midnight Gray



Cranberry



Pewter



Black Obsidian



Nordic White



Ocean Blue



Champagne

ELANTRA GLS



Elantra GLS in Cranberry

TIBURON





16-valve DOHC engine.

Impressive stuff, indeed.

But let's not forget Tiburon's

refined side. Tiburon comes

with standard comfort and

convenience features such as

air conditioning, AM/FM stereo cassette, power windows,

locks and mirrors, tilt steering column, electric rear window

defroster, split-folding rear seat, digital quartz clock,

overhead console, and dual front airbags*.

Want to kick things up a notch? Then spice

up your Tiburon with available goodies like

the two-tone sport leather package, power

sunroof and premium AM/FM/CD stereo.

With comfort, style

and performance to

spare, the 2001 Tiburon

is one great argument

against mass transit.

*The Supplemental Restraint (airbag) System (SRS) is designed to work with the 3-point seatbelt system. The SRS deploys in certain front end impact conditions where significant injury is likely. The SRS is not a substitute for seatbelts which should be worn at all times. Children under the age of 13 should be restrained securely in the rear seat. NEVER place a rear-facing child seat in the front seat of a vehicle with a passenger-side airbag.



IF YOU'RE A PRO RALLY DRIVER, OR JUST WANT TO LOOK LIKE ONE.

Either way, have we got a car for you:

the 2001 Tiburon. A direct descendant

of 3-time SCCA Manufacturers Pro Rally

Champions. With street credentials like

muscular styling that turns heads. A track-

tuned suspension that tames corners. High-performance

Michelin radial tires

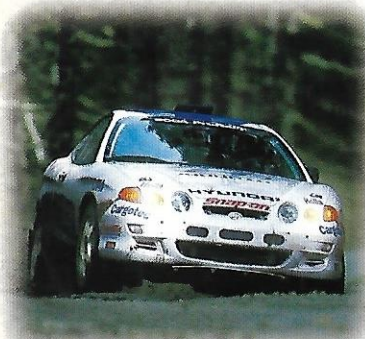
and 15" aluminum alloy

wheels. A quick-shifting

5-speed manual

transmission and a

2.0-liter, 140-horsepower,



Super Silver



Cobalt Blue



Cardinal Red



Alpine White



Jet Black



Lithium Yellow

Standard Features:

- 2.0-liter, 140-horsepower, 16-valve DOHC Engine
- Bodycolor Rear Spoiler
- Sport-tuned Fully Independent Suspension
- Michelin High-performance Radial Tires
- Dual Front Airbags*
- Air Conditioning
- 6-speaker AM/FM Stereo Cassette
- Power Windows, Locks and Mirrors
- Cruise Control
- 15" 5-spoke Alloy Wheels
- Tilt Steering Column
- 50/50 Split-folding Rear Seat
- Overhead Console w/Digital Quartz Clock
- Tinted Glass
- Electric Rear Window Defroster with Timer

Standard Features:

- 1.5-liter, 92-horsepower SOHC Engine
- Power Steering
- Fully Independent Suspension
- Dual Front Airbags*
- AM/FM Stereo Cassette
- Variable Intermittent Wipers
- Dual Remote Mirrors
- Folding Rear Seat
- Protective Bodyside Moldings

Accent GS and GL Add:

- 1.6-liter, 105-horsepower DOHC Engine
- Tinted Glass
- Tachometer and Digital Clock
- Multi-adjustable Driver's Seat w/Folding Armrest
- Remote Fuel Door and Cargo/Trunk Releases
- 60/40 Split-folding Rear Seat
- Rear Wiper/Washer (GS)

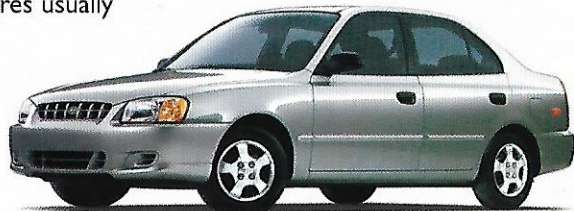


AFFORDABLE. PRACTICAL. AND SO STYLISH, NO ONE WILL KNOW.

Until Accent came along, the words "affordable" and "enjoyable" almost never described the same car.

Fortunately, Accent changed all that with lots of advanced technology, lively performance and fun styling. And for

2001, Accent continues to show the world how enjoyable an affordable car can be. Inside and out, Accent offers features usually



reserved for much more expensive cars. Security? Every Accent comes with dual front airbags*, front seatbelt pretensioners and



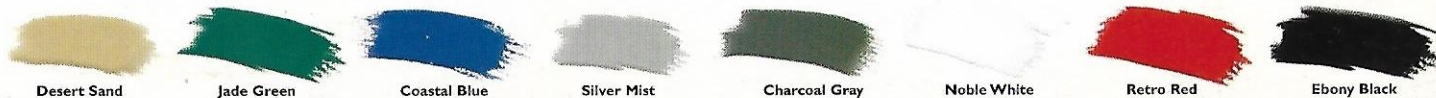
force limiters, and steel safety cage construction. As for performance, how does a multi-valve engine, 5-speed manual overdrive transmission and fully independent

suspension sound? And comfort? Accent's standard amenities include AM/FM stereo cassette, dual remote mirrors, power steering, folding rear seat, electric rear window defroster and front center storage console. It all adds up to what may

be Accent's most impressive standard feature of all: a new definition of value.



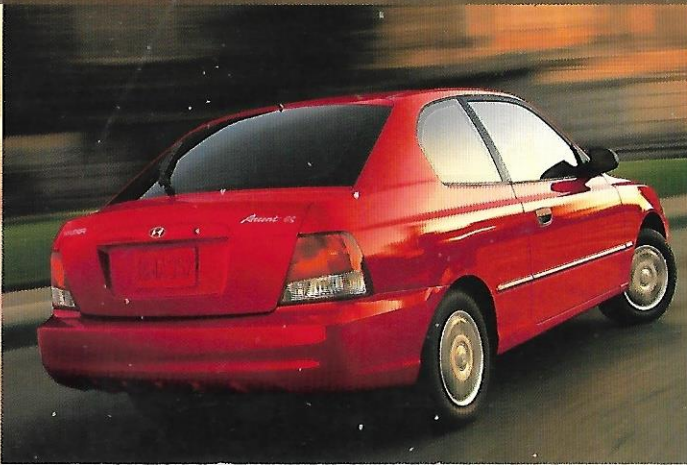
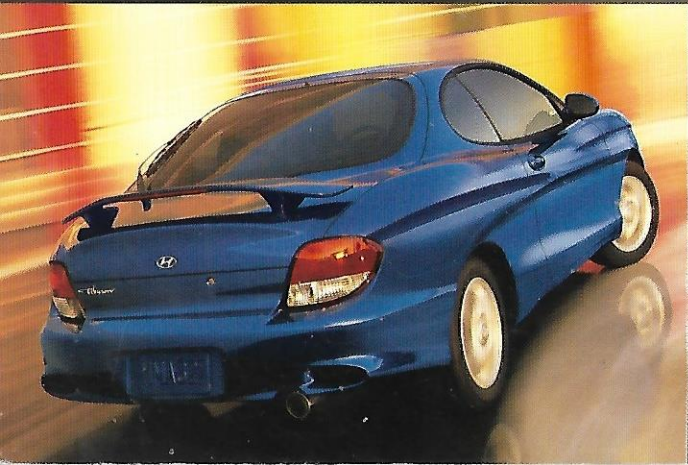
*The Supplemental Restraint (airbag) System (SRS) is designed to work with the 3-point seatbelt system. The SRS deploys in certain front end impact conditions where significant injury is likely. The SRS is not a substitute for seatbelts which should be worn at all times. Children under the age of 13 should be restrained securely in the rear seat. NEVER place a rear-facing child seat in the front seat of a vehicle with a passenger-side airbag.



ACCENT



Accent GS in Coastal Blue



WWW.HYUNDAIUSA.COM
800-826-CARS

While the information contained in this brochure was correct at the time of printing, specifications and equipment can change. No warranty or guarantee is being extended in this brochure and Hyundai reserves the right to change product specifications and equipment at any time without incurring obligations. Please contact your Hyundai dealer for current vehicle specifications.



HYUNDAI
HYUNDAI MOTOR FINANCE COMPANY

NP020-01024 ©2000 Hyundai